

Document Scanners

fi-6010N

network







fi-6010N



- One-Stop Network scanning solution
- Integrates paper documents into modern office communication using email, fax transmission, filing and printing
- Superior user support with customised one-touch job profiles
- Excellent user experience through large high grade colour touch screen interaction and inbuilt full size keyboard
- Secure authentication and data transmission
- Convenient and powerful central administration
- Professional document scanner with high class duplex batch scanning
- Seamless integration into ECM solutions through an SDK to effectively provide the enterprise users with an on-ramp for paper documents into professional DMS

FUJITSU

THE POSSIBILITIES ARE INFINITE

fi-6010N	50 Sheets	50 to 600 dpi	Simplex 25 ppm	Duplex 50 ipm	
					

Intelligent, Integrated and Individual

The Fujitsu fi-6010N is a network scanner solution that captures paper documents in today's multi-location business environments and improves modern office communication, speeds up business processes and helps CTOs and CIOs, CFOs and CEOs to meet compliance requirements with their preferred ECM systems. It can support groups of individuals with even the most complex paper document centric processes, yet without being particularly demanding on the user.

Technically superior document scanner for professional users

At its core the Fujitsu fi-6010N is foremost a professional document scanner. In fact, it is based on the world's single most sold document scanner and has inherited superior characteristics:

- 25 ppm / 50 ipm (duplex) at 150 dpi in all colour modes
- Unique Ultrasonic Double feed Detection
- Mixed batch and embossed card scanning (ISO 7810)
- Automatic colour detection
- Automatic detection of document size
- Automatic cropping and page orientation
- 50 page ADF
- A8 – A4 scanning (plus optional A3 document stitching)

The fi-6010N's scanning specifications define it as the ideal scanning station for small and mid-size businesses that need to archive documents, scan in reports to OCR or implement an efficient document management system, whilst enabling everyone in the organisation to capture ad hoc over the network. The fi-6010N is also perfectly suited for more sophisticated document management and workflow solutions where usually scanners are needed at a single user or workgroup level. Now with one single device, even departments or remote sites can be integrated in document capture and management plans and policies.

The fi-6010N will process upwards of several hundred documents every day. The duplex capability enables capture of both sides of the original document in one pass, whilst the 50 sheet automatic document feeder (ADF) is ideal for uninterrupted scanning of multi-page documents and batches where paper sizes may vary from A8 to A4. Paper qualities can be diverse and even plastic cards can be scanned.

The fi-6010N has a remarkably small footprint compared to its impressive functionality. It is ideal for desktop placement, being easy to reach for everyone passing by, to log in (just as the user would do on his or her desktop PC), to insert a stack of documents into the ADF and then to select a single function communication process via the scanner's large 8.4" colour touch screen. The result of the capture process can be displayed for a visual check on screen and the automatic results will impress the user to use the fi-6010N over and over again as the natural on-ramp for paper documents to modern office communication.

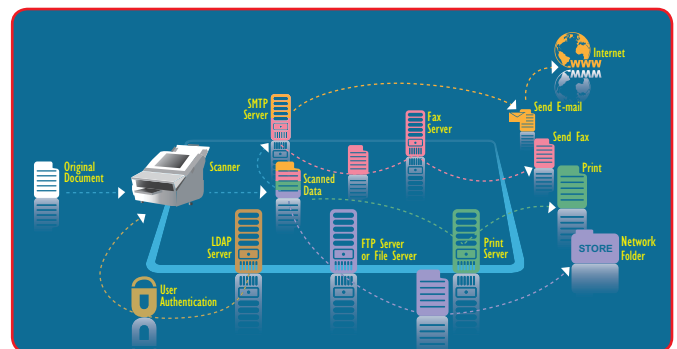
But simple scanning and checking is not all there is to capturing paper documents with this multipurpose device. The fi-6010N features an in-built hardware keyboard that provides for input capabilities unmatched by comparable networked devices. It offers easy and ergonomic usage so that users will be able to regularly comment and annotate the documents that they are transmitting via email or fax.

The fi-6010N provides a wide variety of supported file formats that can automatically be created, including PDF. This file format can even be automatically created with an encapsulated text layer generated by the embedded text recognition engine.

A modern Office Communication Device that integrates paper

Basic office communication processes can be quite complex when you approach them from a technical perspective. The Fujitsu fi-6010N is a highly sophisticated network communication device that allows for integrating paper documents into modern office communication processes by scanning paper and transmitting captured data as electronic files. As basic functions, the fi-6010N will:

- Send documents as email attachment to one or more recipients
- Send documents by fax (connection to RightFax server required)
- Scan documents to a network printer to create hard copies
- Save document files to a network folder.



The fi-6010N demonstrates a vast array of process functionalities which is inherent to the device and requires no user intervention. In fact the user interface is straightforward and displays an easy to use selection menu:

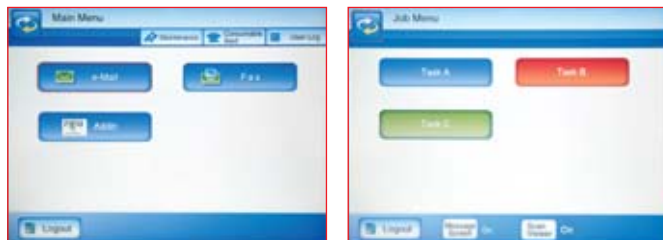


"JOB function"

The fi-6010N's "JOB function" enables administrators to remotely set-up and distribute profiles. Simple "one-touch" menu selection buttons for printing, saving and transmission operability meet each user's specific requirements and duties.

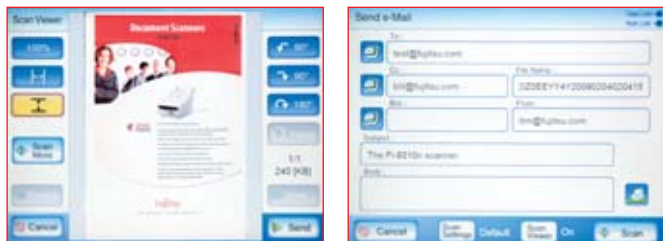


Thereby, the information worker or group members can perform scanning routines ad hoc that will allow for initiating simple single function activities like capturing a document to a predefined file directory for post processing. But even more complex routines or cascaded processes can be triggered.



Ultimately the remote on-ramp for valuable paper documents into Enterprise Content Management and Business Process Systems

The Fujitsu fi-6010N can be seamlessly integrated into the most efficient business environments and enterprise content management systems (ECM) using the Fujitsu fi-6010N SDK. IT and MIS administrators will be able to easily add in an additional menu button that will offset connections to archives, DMS or ECM. In this way scanning with the fi-6010N develops from document capture to effective information capture, for fast and accurate processing. The fi-6010N SDK supports high-level application development Microsoft® .NET Framework 3.5.



Securely and conveniently the CTOs preferred choice

With the fi-6010N server interactions and transmissions are completely encrypted for strengthened security. Transmission of user data like authentication against the LDAP server or transmission of document data is performed within secure socket layer protected protocols. The fi-6010N is an embedded system in the sense that no open interface ports allow for document data theft or infecting the network with malware. And then of course the Fujitsu fi-6010N allows for complete central administration of even up to 1,000 devices. This includes unified updates, eliminating the need to define and upload settings to individual scanners one by one. Similarly scanner surveillance is easy, providing real-time consumable replacement information for all managed devices. Individual settings and profiles can be defined centrally by the IT admin, creating profiles that are uploaded to the central admin

server to which the Fujitsu fi-6010N connects. This functionality and principle allow for every user's scanner settings and user defined e-mail address lists to roam across the network from scanner to scanner, effectively providing the user with exactly the same set of menu items and capture support regardless of which device he might be logging in to.

Major benefits of the Fujitsu fi-6010N are manifold and the list provided here falls short of naming all of the huge gains in business efficiency and reductions of process costs that the fi-6010N can provide. But when you come to think of it, Fujitsu and the broad community of Fujitsu's ISV partners actually provide a large variety of certified standard integrations already that can help you improve your document related processes with professional capture devices and solutions.

Fujitsu fi-6010N benefits for Corporations:

- Improve efficiency and information accuracy
- Reduce process time and cut costs
- Increase compliance
- Take full advantage of fi-6010N without training requirements
- Eliminate errors and time-consuming steps of document capture by automating and standardising repetitive processes

Fujitsu fi-6010N benefits for End Users:

- Streamline document processing by creating personalised workflows
- Increase work accuracy, flexibility and mobility
- Send to user's personal directories or by email to personal inbox
- Send to Document Management Systems
- Provide image preview and validate data before sending
- Collaborate more effectively with others
- Utilise individual professional skills and knowledge without needing to learn complex rules or new applications

Fujitsu fi-6010N benefits for IT Administrators:

- Easy to install and set up
- Centralized management of all capture points
- Easy to use process design for setting up workflows and route documents to:
 - Network or FTP folders, Email addresses, PC client email inboxes, Fax servers and printers
 - DMS and ECM connectivity as standard integrations (e.g. including Documentum, FileNet, Microsoft Office SharePoint, IBM CM, FileNet and more...) or individually with fi-6010N SDK

fi-6010N Specifications



Model	fi-6010N	
Technology	Dual Colour Charge coupled device (CCD) image sensors, 80 Gb SATA 3.5 in HDD	
Resolution	Optical: 600 dpi / Output: 150, 200, 300, 600 dpi	
Halftone patterns	Dither and error diffusion automatic	
Colour	24-bit single pass colour, auto colour detection	
Scanning speed	Simplex: 25 ppm (200 dpi), Duplex: 50 ipm (200 dpi)	
Scanning mode	Simplex and Duplex	
Document feeding mode	Automatic document feeder (ADF)	
ADF capacity	50 Sheets (A4: 80 g/m ²)	
Document size	ADF minimum	(A8) (53 mm x 74 mm)
	ADF maximum	(Legal) (216 mm x 356 mm)
	Network protocols	TCP/IP DHCP, SMTP, SMB, LDAP, NTP, FTP, HTTP
Network server	Windows 2000, 2003, 2008	
Output file formats	TIFF, MTIFF, JPEG, PDF, searchable PDFs (English)	
Interface	One network connection RJ45 10BASE-T, 100BASE-TX	
Software driver support	All software loaded on system (embedded)	
JPEG compression	Hardware; choose from 7 different levels	
Power requirements	AC 100 – 240 V ± 10%	
Power consumption	Scanner	28-34 W, Energy saving mode: 6 W or less
	Computer	88 W or less, Energy saving mode: 10 W or less
Operating environment	Temperature	42° to 95° F (5° to 35° C)
	Relative humidity	20% to 80% (non-condensing)
Dimensions (W x D x H)	315 x 415 x 281 mm	
Weight	13 KG	
Automatic image processing	Auto deskew, auto orientation, auto page size detection and blank page detection	
Security	Password protected (PDFs), login authentication (LDAP)	
Touch panel	Screen size	213 mm XGA (1024 x 768 pixel) TFT colour monitor
	Type	Analog resistive touch display



ENERGY STAR® compliant

Consumables	Part number	Remarks
Consumable Kit	CON-3289-0003A	2 x Pick Roller and 4 x Pad Assy for up to 200,000 documents
Keyboard cover	PA03544- (K600 through to K610)	Keyboard covers are available to support multi-lingual usage (in order of part number: K600 Italian, K601 German, K602 French, K603 Spanish, K604 Portuguese, K605 Russian, K606 Korean, K608 UK English, K610 Turkish)

Options	Part number	Remarks
fi-6010N SDK (fi-601SDKW)	PA03544-K505	This software development kit (SDK) assists with the development of fi-6010N control related applications
Carrier sheet (fi-511ES-WW)	PA03360-0013	Each package contains 5 carrier sheets. It is recommended that each carrier sheet be replaced after it has been used for 500 scans

All names, manufacturer names, brand and product designations are subject to special trademark rights and are manufacturer's trademarks and/or registered brands of their respective owners. All indications are non-binding. Technical data is subject to change without prior notification.

The fi-6010N is a multi-language device that supports a wide variety of local languages through the use of a keyboard layout panel that will match selected menu languages (languages supported are: English (US and UK), French, German, Italian, Korean, Portuguese, Russian, Spanish and Turkish).

© Copyright 1993-2009, Fujitsu Europe Ltd. All rights reserved. R.02.09 P.02.09 / ENG



Fujitsu Europe Limited

Hayes Park Central
Hayes End Road, Hayes
Middlesex UB4 8FE
England
Tel: (+44-(0)20) 8573 4444
Fax: (+44-(0)20) 8573 2643

Fujitsu Deutschland GmbH

Frankfurter Ring 211
80807 Munich
Germany
Tel: (+49-(0)89) 32378-0
Fax: (+49-(0)89) 32378-100

Fujitsu Italia S.p.A.

Via Nazario Sauro, 38
20099 Sesto San Giovanni (MI)
Italy
Tel: (+39) 0226294.1
Fax: (+39) 0226294.201

<http://emea.fujitsu.com/scanners>



THE POSSIBILITIES ARE INFINITE