

RICOH
imagine. change.

Pro™
C901/901S
Graphic Arts Edition

Colour Production Printer



Pro™
C901

90
ppm
B/W
Colour

Pro™
C901S

90
ppm
B/W
Colour

Redefining digital print for professionals

Innovation is in our blood. Ricoh production presses are built upon a rich heritage of continuous research and development. Built to order at our European manufacturing plant and stress tested in customer configurations to ensure top performance, the Ricoh Pro™ C901/C901S Graphic Arts Edition sets new standards of productivity, efficiency, quality and profitability.

The Ricoh Pro™ C901/C901S Graphic Arts Edition is an advanced best-in-class digital colour production system that takes print quality and printer reliability to another level in the professional production print environment. Equipped to produce an incredible variety of printed materials, the Pro™ C901/C901S provides impressive levels of versatility, scalability and performance.

Its flexible workflow, feeding and inline finishing suits any print volume, low or high, while paper path technology enhancements significantly improve productivity, front to back registration and colour accuracy, impressively marrying offset-like quality with the added value of digital.



Our best press yet

The latest version of a proven Ricoh platform, the Ricoh Pro™ C901/C901S Graphic Arts Edition's powerful features include:



The market's fastest press in class

Printing at rated speeds of 90 A4 pages per minute on media up to 300gsm in duplex mode.

Air-Assist technology, available on all input trays, ensures reliable and fast media feeding and makes media transport throughout the engine smooth and simple.



PxP™ polymerised toner

And oil less technology for improved accuracy, reliability, flexibility and ease-of-use delivering offset-like results. Because the toner grain is smaller and homogenized, it creates a sharp dot shape and consistent half-tone image capable of rivalling offset quality.



Operator Replaceable Units (ORUs)

For easy on-site maintenance and maximum uptime. Long-lasting supplies and consumables, such as the fuser unit and dust filters that can be replaced to minimise disruptions and downtime.



Extensive Ricoh built media library

Automates media settings for high quality output and fast production workflow. Makes it simple to create highly finished applications with the least press operator intervention as possible. Anyone can set print jobs with the easy-to-master intuitive interface of the colour touch screen.

All the features you need to succeed



Easily the fastest engine in mid-production

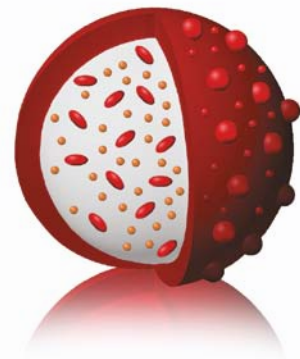
It prints at rated speeds of 90 A4 colour pages per minute in duplex mode. It accepts media sizes up to SRA3 with a maximum weight of 300gsm without compromising speed.

Integrated full-colour scanning, copying and document storage is designed to meet image capture and print-on-demand requirements. The engine also supports accurate registration on heavy 300gsm paper – ideal for direct mail, postcards and business card printing.

PxP™ polymerised toner and oil less technology with enhanced fusibility

Creates an incredible variety and volume of printed materials, and ensures that our colour production system is more accurate, more reliable, more flexible and easier to use than ever before, automatically delivering colour consistency and offset-like imaging throughout the print run.

Oil less technology and enhanced media fusing, in conjunction with the new paper air separation unit, smoothes the paper path when printing on lightweight coated paper. Outstanding results and colour consistency is achieved on all weights of media including heavy coated, textured and special media and on the longest of runs.



ORUs

Help reduce cost and maintenance requirements and maximise productivity. Trained operators can replace key imaging components without waiting for a service engineer, thereby optimising image quality and minimising downtime.

A comprehensive range of ORUs include the Fuser Unit, Dust Filters and Feed Rollers of SRA3 Large Capacity Trays, OPC Drum, Developer, Charger Unit, Drum Cleaning Unit, Belt Cleaning Unit and Paper Transfer Roller Unit.

Complex jobs made easy

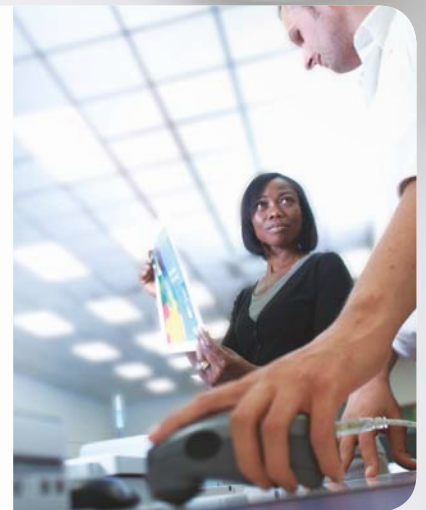


Extensive Ricoh built Media Library

It holds up to 260 profiles tested and proven by Ricoh at the time of launch. A custom library function lets users add their own profiles and a back-up area has capacity for an additional 1,000 media settings. This is regularly extended by the European Media Qualification Centre, which is based at Ricoh Products Limited in Telford, UK while the printer remains in use.

The perfect controller

Simple to manage and operate, any user can set complex printing jobs, applying settings by selecting a preset or custom media type which will synchronise after each update with the printer server media library on an EFI Fiery™ E-41, EFI Fiery™ E-81 or Creo C-81 Color Server to provide advanced colour and job management tools. These tools, in conjunction with the Media Library's advanced features, deliver outstanding colour reproduction time after time.



Pro™ C901/C901S Graphic Arts Edition. Enhanced performance to meet your volume print needs

New paper path technology helps heighten productivity levels, reducing the risk of misfeeds and paper jams, enhancing the duplex function and delivering improved fusing on all weights and textures of paper, ensuring accurate registration even on heavy 300gsm paper.

State-of-the art, efficient Ricoh workflow management



The Latest Adobe® technology

Offered with the Pro™ C901/C901S Graphic Arts Edition is a range of external print servers that use the latest Adobe® PDF Print Engine (APPE) technology. They deliver consistently high throughput and support finishing options to suit your specific workflow and print application requirements.

The EFI E-41 Fiery Server will be connected as standard. Adobe APPE technology and Fiery's System 9 (their latest) will form the basis of the Pro™ C901/C901S Graphic Arts Edition configuration. The E-41 is fully featured, the print server of choice for production print customers using standard applications.

Increased performance

For more processing power we offer the E-81 Fiery Server and the Creo Color Server C-81. These high-end controllers allow you to produce a wide variety of print jobs – from straightforward, static jobs with minimum image content to complex, variable, one-to-one marketing pieces with high visual impact. They are the perfect choice for print jobs that are image intensive and contain complex variable data components.

The E-81 Fiery Server is based on the EFI E-41 Fiery Server with improved hardware specification. The C-81 is based on Adobe APPE technology and on Creo's latest software and hardware configurations.



Plug-and-play solutions

Both the E-41/E-81 and the C-81 can be integrated into high end, prepress workflow solutions, such as Kodak Prinergy® and Agfa Apogee®, used within the commercial print market.

With so many options Ricoh can supply a solution matched to your production needs. As all our solutions are plug-and-play, you can upgrade from one print server to another if, at any time, your requirements change.



Optimise your production environment



The TotalFlow portfolio

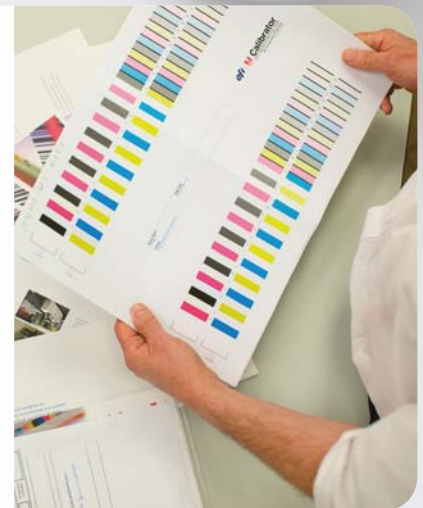
Ricoh TotalFlow brings together an impressive portfolio of powerful software and business solutions to streamline your entire production print process. By identifying your specific needs, it creates the most effective solution that broadens your service proposition and sets new standards of productivity, quality and profitability.

Capture regular and new print opportunities using web-to-print and job submission tools that help you move to a fully automated production process that enables you to interact more efficiently.

Drive print efficiency

Prepare to drive print efficiency with variable data and print data stream transformation solutions. Prepare files for production with document imposition and composition tools, whilst boosting efficiency, reducing production time and increasing profitability.

Manage jobs across multiple printing systems, automating workflow with streamlining options to optimise productivity and meet tight deadlines. Make last-minute changes, automatically prepare for split-colour and B&W production, produce complex documents faster and more efficiently.



Versatile, scalable, complete control

Output from the new Ricoh Pro™ C901/C901S Graphic Arts Edition series boosts your value added services with versatile, scalable solutions that embrace digital colour and B&W production systems. It improves output capabilities with high quality cost-effective print solutions to gain new business.

Control enables you to see, track, manage and report across your entire operation, across sites, from a single dashboard. Through complete managed workflow interaction, you can optimise your production processes and increase efficiency.

Versatile automated finishing, uninterrupted productivity



Inline finishing options

Our Ricoh inline finishing options include a new all-in-one saddle stitch finisher that can produce fully-finished brochures with up to 80 pages with fore-edge trimming; a Ring Binder that automates the entire binding process by punching, collating and applying the ring bind without any manual intervention and a Perfect Binder that produces professional-looking books from 10 to 400 pages in duplex mode. These and all other options guarantee complete and cost-efficient solutions for complex jobs.

Increase capacity

Ricoh high-capacity stackers provide up to 10,250-sheet stacking capacity when two units are configured in tandem, with automatic switching when fully stacked, for long and uninterrupted print runs.

One option, in alliance with the Pro™ C901/C901S media library and heavy duty die sets for commercial environments, is the GBC StreamPunch Pro™. It rapidly produces punched and collated documents in a variety of media including heavy and coated that are then bound with a large variety of rings in an off-line operation.



Offer more solutions

Ricoh has also introduced the Plockmatic two-side trimming module that, with the existing booklet maker, offers inline three-side trimming which will precisely trim through 25 sheets of 80gsm paper. Designed for heavy duty operation, the booklet is self-contained and has the ability to bind Square Fold with cover page insertion.

Meeting today's evolving market trends



Matching business needs

Ricoh has a long-standing commitment, both strategic and financial, to researching our markets regularly in order to ensure that our products evolve as quickly as your needs do. Recent research highlighted the following trends. See how the Pro™ C901/C901S not just meets, but exceeds them.

Trend: Colour/monochrome mixed printing

Pro™ C901: High speed colour and B&W printing, various inline finishers, new inline booklet finisher and trimmer provides the flexibility and capacity to match business needs.

Trend: Shift from offset to digital to meet short run, short turnaround demands

Pro™ C901: A heavyweight production press at an affordable price with expanded media support, offset like image quality from a new toner and oil less technology and highly accurate front to back registration to help meet end-user demands.

Trend: Shift of outsourced jobs in-house

Pro™ C901: High productivity, high image quality, wide media support, user-friendly intuitive user interface for fast learning that helps save the expense of outside print providers; more control and efficiency for increased new business and greater commercial return.

Trend: Keeping productivity up to highest levels possible

Pro™ C901: Maintains 90 A4 pages per minute without compromising speed on heavy stocks and supports Ricoh's extensive Media Library; offers high productivity and is competitively priced.

Trend: Affordable upgrade from light production to meet new demands

Pro™ C901: 90 A4 pages per minute up to 300gsm heavy stock in duplex; provides quick Return On Investment and opens to more attractive commercial applications with fast turnaround times.

Trend: Increase in colour one-to-one variable data direct mail

Pro™ C901: Extensive variety of print servers from EFI and Creo; high productivity, reliability for variable data printing; accurate front to back registration; printing on special or polymer media for profits generating personalised output with high response rates from end clients.

Trend: Transactional promotional printing – where colour is adding value

Pro™ C901: High productivity and fast data processing; robust EFI and Creo print servers with capabilities for complex Variable Data Printing and easy connectivity to existing data workflows; maximised uptime with Operator Replaceable Units (ORUs) for 24/7 print environments with peak production times.

Designed specifically for the professional production print environment



Setting new standards

The new Pro™ C901/C901S Graphic Arts Edition sets new standards for productivity, efficiency, quality and profitability.

Impeccable image quality is delivered at speed. Non stop performance is underpinned with robust reliability. These colour production printers are easy to use, incredibly reliable and effortlessly productive and have been designed to meet the most demanding requirements of any professional print environment.

Market segment

Commercial or Digital Printer

These configurations can easily meet high volume needs and easily integrate with existing workflow environments such as Heidelberg®, Prinect®, Kodak Prinergy® or Agfa Apogee®. In addition, the ability to print directly onto a wide range of coated and special media stocks means an easier switch of production processes from traditional to digital. Outstanding print quality provided by the PxP™ polymerised toner will enable commercial and digital printers to meet customer demands for short run, fast turnaround print collaterals.

In-Plant or Data Centre

Compact and versatile, these machines pack the speed and productivity to meet high volume demand whilst taking up relatively little space. Output print quality is superb and the Pro™ C901/C901S is able to handle heavy weight media with ease. In addition, the Pro™ C901/C901S have a variety of inline finishing options which help in-plant environments automate print processes and reduce labour costs.

Direct Mailer

The Pro™ C901/C901S handles variable data printing applications with ease, offers outstanding productivity via the professional print servers available from EFI and Creo and are the affordable solution for direct mailer customers by offering colour usage for value-added and attractive one-to-one applications.

Print for Pay

For printing with fast turnaround times, the Pro™ C901/C901S offers great speed and durability and provides colour management tools for easy operation and repeatable professional looking colour output.

Configured for you...

Pro™ C901/C901S FOR COMMERCIAL PRINTER

Pro™ C901 print engine with Buffer Pass unit, two SRA3 Large Capacity Trays with Multi Bypass Tray, two Trays Cover Inserter, tandem connected High Capacity Stackers, standard Staple Finisher, fully configured Plockmatic Booklet Maker with optional cover feeder and two side trimmer, EFI E-81 print server



Pro™ C901/C901S FOR IN-PLANT OR PRINT ROOM

Pro™ C901 print engine, two SRA3 Large Capacity Trays with Multi Bypass Tray, Z-folding unit, Ricoh Perfect Binder with cover feeder and three side trimmer, standard Staple Finisher, EFI E-41 print server



Pro™ C901/C901S for Direct Mailer

Pro™ C901 print engine with Buffer Pass unit, SRA3 Large Capacity Tray with Multi Bypass Tray, High Capacity Stacker, Ricoh professional Booklet Finisher with optional fore-edge trimmer, Creo C-81 Color Server



Pro™ C901/C901S FOR PRINT FOR PAY

Pro™ C901 print engine, SRA3 Large Capacity Trays with Multi Bypass Tray, two Trays Cover Inserter, Ricoh Ring Binder, Ricoh professional Booklet Finisher with optional fore-edge trimmer, EFI E-41 print server



Innovation is in our blood



For performance and productivity

Like all Ricoh production presses, the Pro™ C901/C901S Graphic Arts Edition is built upon a rich heritage of, and firm commitment to, continuous research and development, leading to an impressive array of innovations. Our new powerhouse is just one of them.

Equipped to produce an incredible variety of printed materials, the Pro™ C901/C901S digital colour production system brings versatility, scalability and performance that's ideal for production environments. Its flexible workflow, feeding and finishing suit any print volume, low or high, while paper path technology enhancements significantly improve productivity.

Added value built in

With a short learning curve for operators and extensive automation, together saving time and money, you can readily take on new kinds of jobs, finish them faster and make the most of your company's growth potential with the Pro™ C901/C901S. Whatever your type of operation, the new Pro™ C901/C901S puts greater productivity and profitability well within your grasp, all with the highest quality assured.

All-in-one excellence

Offering versatile scanning, copying and archiving, the Pro™ C901S is ideal for environments that need one system to do everything. It delivers consistent, high quality colour output at high speed on a wide variety of media, even in the most demanding production environments.

Work-efficient, cost-efficient

Extremely durable, it stands up to heavy use in high print volume environments, matching its strongest competitors on performance and cost. Robust and straightforward to use, you can print simple jobs on common stocks or complex jobs on heavyweight stocks, huge runs or short ones. The Pro™ C901/C901S is easily the fastest model in mid production.

Your business doesn't stop; neither do we

You're connected to our professional service and support for your machine night and day. Our dedicated, proactive service will keep downtime to the absolute minimum for you while also ensuring the efficiency and profitability of your business becomes as high as possible.

Worldwide network

We provide a worldwide network of over 18,000 highly skilled performance engineers, many on call 24 hours a day. Simply telephone or email and they'll respond as quickly as they can. You can rely on our comprehensive, world class advice and support to be committed and continuing over the lifetime of our business relationship together.

Added Value Partnership

Ricoh acts as a go-to resource for all professional printing providers. We can prioritise options, recommend winning solutions and work with you in tandem to implement and support them.

Our strategy includes long-term investments in added value programmes; a partnering, consultative approach; highly experienced pre and post-sales specialists; a leading service network guaranteeing the highest possible uptime and availability of hardware and software, plus a tailored business development programme to accelerate your growth in the digital production market.

The choices you need to succeed



1 Pro™ C901

Printer version - Pro™ C901 colour production printer with two standard input trays of 1,000 sheets each. There is no upgrade path from Pro™ C901 to Pro™ C901S (print engine version with integrated Scanner and one SRA3 Large Capacity Tray). If copy and scan functionality is likely to be required, Pro™ C901S must be selected at the outset.

Pro™ C901

Scanner integrated version - Pro™ C901S colour production printer with two standard input trays of 1,000 sheets each. Print engine includes scanner and one SRA3 Large Capacity Tray with capacity of 4,000 sheets as standard. If copy and scan functionality is likely to be required, Pro™ C901S must be selected at the outset.

2 Print Server

Common to both Pro™ C901 and Pro™ C901S print engines include:

- EFI Fiery E-41 print server
- EFI Fiery E-81 print server
- Creo C-81 Color Server
- All server stands are optional for print servers and are not included.

There are two external EFI Fiery print servers and one Creo Color Server available. EFI E-41 for standard print environments, EFI E-81 and Creo C-81 servers for high productive, graphic oriented print environments. A print server is a mandatory requirement and must be ordered with the print engine.

All three servers are external units.

3 Large capacity input options

One A4 Large Capacity Tray (LCT) with capacity of 4,550 sheets or one or two SRA3 LCTs with capacity of 4,000 sheets can be attached. It is not possible to attach an A4 LCT and an SRA3 LCT together. Pro™ C901S is supplied with integrated first SRA3 LCT as standard. A bridge unit (not shown) is required if attaching a second SRA3 LCT to both Pro™ C901 and Pro™ C901S print engines. SRA3 LCTs come with integrated air assist feeding system. Maximum input capacity for both Pro™ C901 and Pro™ C901S print engine is 10,500 sheets (2 x engine standard input trays, 2 x SRA3 LCTs and multi bypass tray).

4 Multi bypass tray/SRA3 LCT

The multi bypass tray with 500 sheet capacity can only be attached to the first SRA3 LCT with Pro™ C901 and second LCT with Pro™ C901S print engine. It can not be attached to the A4 LCT.

■ Ricoh standard finisher

Standard staple finisher with output stack capacity of 3,000 sheets, 100 sheet stapler and jogger unit can be attached. 2/4 switchable hole punch, or Scandinavian 4-hole punch can be integrated.

■ Ricoh professional booklet finisher/trimmer unit

With the output stack capacity of 2,500 sheets and saddle stitch unit as standard. 2/4 switchable hole punch, or Scandinavian 4-hole punch can be integrated. The fore-edge trimmer unit is an option for the booklet finisher. The trimmer unit cannot be attached to the Ricoh standard finisher. Standard finisher and Professional finisher cannot be connected together.

5 Cover interposer

The Cover Interposer unit can be attached in combination with a Ricoh standard finisher or Professional booklet finisher. It can feed media up to SRA3 size from two inserting trays with capacity up to 200 sheets per one tray.

■ Z-folding unit

The Z-folding unit can be attached in combination with a Ricoh standard finisher or Professional booklet finisher.

■ Perfect Binder

A Perfect Binder can be attached in combination with a Ricoh standard finisher or Professional booklet finisher or one high capacity stacker. The Perfect Binder can produce books inline up to 400 pages, feed covers and three-side trim the book after the binding operation.

■ Ring Binder

A Ring Binder can be attached in combination with a Ricoh standard finisher or Professional booklet finisher or one high capacity stacker. The Ring Binder can produce 23-hole punched ring bounded booklets inline up to 200 pages and applies the ring in black or white colour.

■ ORUs

A comprehensive range of ORUs include the Fuser Unit, Dust Filters and Feed Rollers of SRA3 Large Capacity trays, OPC Drum, Developer, Charger Unit, Drum Cleaning Unit, Belt Cleaning Unit, Fusing Unit and Paper Transfer Roller Unit.

6 High capacity stacker

The picture shows a stacker cart inside an open high capacity stacker. The high capacity stacker is supplied with one cart, with additional carts available as an option. A maximum of two stackers can be attached to both Pro™ C901 and Pro™ C901S print engines with an output capacity of 10,250 sheets. Where two stackers are attached together, a buffer pass cooling unit (not shown) needs to be installed behind the print engine. Two high capacity stackers can be attached, unless a Perfect Binder, Ring Binder or Z-folding unit is included, whereby only one high capacity stacker can be configured. It is not possible to attach a high capacity stacker in combination with a 3,000 sheet finisher when configured with either the Perfect Binder or Ring Binder.

7 Plockmatic bookletmaker

A Plockmatic booklet maker system requires a Ricoh standard finisher to also be installed. The booklet maker includes an optional square folding unit, cover inserter, fore-edge trimming and two-side trimming module able to trim up to 25 sheets for full three-side trimmed brochures produced in an inline operation.

8 GBC streampunch pro

A GBC StreamPunch PRO punch unit must be always installed with Ricoh standard finisher. It can punch a full range of media types with up to 4,000,000 punched pages with heavy duty die sets.

■ Air separator

An air paper separator is offered as an option for the Pro™ C901 series. This unit ensures reliable separation of coated media and reduces the size of the leading edge margin. With the air separator attached, the Pro™ C901 series engines will reliably feed light coated media of weights between 60 and 160 gsm. The air separator comprises two units. An air compressor unit is located at the rear of the machine inside the outer cover. An air nozzle unit is located at the exit of the fusing unit. The units are connected by a hose. Compressed air is omitted from the nozzle unit to ensure separation of paper from the outer fuser roller. A second air nozzle unit can be ordered for the ORU fuser unit.



Pro™ C901/C901S

MAIN SPECIFICATIONS

PRO™ C901/C901S

Technology:	4-drum electrostatic transfer system with internal transfer belt
Fusing:	Oil less belt-fusing method
Toner Type:	Polymerised toner
Print Speed:	Full Colour/Mono: 90/90ppm
Resolution:	1,200 x 1,200 dpi
Warm-up time:	Less than 420 sec.
Dimensions (WxDxH)	Pro™ C901: 1,280 x 990 x 1,640mm Pro™ C901s: 2,555 x 990 x 1,640mm
Weight:	Pro™ C901: Less than 630kg Pro™ C901s: Less than 860kg
Power Source:	220/230/240V, 25A, 50/60Hz
Power Consumption:	Printing: less than 5,500W Stand-by: less than 3,200W
Duty Cycle:	580,000 pages per month

SCANNER FEATURE

Resolution:	100/150/200/300/400/600 (Default) dpi 100-1,200 dpi (Twain: BW) 100-1,200 dpi (Twain: Colour)
Scan Speed:	(A4, 200 dpi) BW: 75 spm, FC 75 spm, *Scan Speed (A4 LEF, 200 dpi)
Max Scan Area:	297 x 432mm

MEDIA HANDLING

Paper Input Capacity:	Standard: 2 x 1,000 sheets, 1 x 500 sheets SRA3 Large Capacity tray (LCT): 2 x 2,000 sheets Multi Bypass Tray option: 500 sheets
Max. Input Capacity:	10,500 sheets (when 2 SRA3 LCT's and 500 paper tray connected) 11,000 sheets (including Multi Bypass Tray)
Max. Output Capacity:	13,250 sheets (when 2 stackers and standard finisher connected)
Paper size:	Maximum: 330 x 487.7mm
Printable Area:	Maximum: 320 x 480mm
Paper Weight:	Standard Trays: 60-220gsm SRA3 LCT RT5050: 60-300gsm Multi Bypass Tray: 52-216gsm

* Pro™ C901S only.

COLOUR CONTROLLERS

Technology:	E-41
Configuration:	Fiery System 9 Release 2
CPU:	External
Memory:	Intel Core 2 Duo E8400 3.0GHz
HDD:	2GB
DVD-ROM Drive:	160GB
Operating System:	Supported
Network Protocol:	Windows XP Professional x64 Edition
PDL:	TCP/IP, (IPv4, Ipv6) Apple Talk, SMB
Supported Data Format:	Postscript 3, PCL 5c, PCL 6
VDP:	PDF, TIFF, JPEG
Font:	PPML, Fiery Free Form v.1 & 2.1
Network Interface:	136 + 2MM
Service Interface:	Ethernet 1000/100/10base-Tx2
	USB x 8 (Front 2, Back 6) PS2 with USB,
	USB Mouse, USB Keyboard

OTHER OPTIONS

Ricoh Professional booklet maker with optional fore-edge trimmer, Plockmatic Booklet maker with square fold option, cover inserter and fore-edge or 3 side trimming option, GBC StreamPunch™ PRO, VM card, Bridge unit, 500-sheet Multi bypass tray, Punch unit (2/4 switchable hole punch, Scandinavian 4 hole punch, DLT/A3 tray, Tab sheet unit, Z-folder, Dual station cover interposer, 3,000-sheet standard finisher with 100-sheet stapler and jogger unit, Saddle stitch unit, Ring Binder Unit, Perfect Binder Unit, 2 x 2,000-sheet SRA3 large capacity trays, Cooling fan unit, Counter Interface Unit Type A, Cooling buffer pass, EFI Server FACI Furniture Bundle (for E-41 or E-81), EFI Server HDD Security (for E-41 or E-81), Creo Server Stand (for C-81), Spectrophotometer ES-1000 UV Filter, Spectrophotometer ES-1000 Non-UV Filter, Stacker with single or double connection, Roll away cart for stacker, Air paper separator unit, Operator Replaceable Units

WORKFLOW SOLUTIONS

EFI™ MicroPress®, EFI™ Digital StoreFront®, EFI™ Color Profiler Suite, EFI™ Fiery® Graphic Arts Package Premium Edition Upgrade (option for EFI E-41), EFI™ SeeQuence Compose, Creo Process Power Pack, Creo Color Pack, Creo Imposition Pack, DirectSmile®, EFI™ Fiery® Central, Ready4Print, ATI doc-Q-manager, Objectif Lune PlanetPress, Objectif Lune PrintShop Mail, NowPrint

ENVIRONMENTAL INFORMATION

Energy Star 1.1	
Pro™ C901/C901S with EFI Fiery E-41 print server	Yes
Pro™ C901/C901S with EFI Fiery E-81 print server	Yes
Pro™ C901/C901S with Creo C-81 Color Server	Yes



RICOH
imagine. change.

ISO9001 certified, ISO14001 certified

All brand and/or product names are trademarks of their respective owners. Specifications and external appearance are subject to change without notice. The colour of the actual product may vary from the colour shown in the brochure. The images in this brochure are for illustration purposes only, slight differences in detail might appear.

Copyright © 2012 Ricoh Europe PLC. All rights reserved. This brochure, its contents and/or layout may not be modified and/or adapted, copied in part or in whole and/or incorporated into other works without the prior written permission of Ricoh Europe PLC.

www.ricoh-europe.com