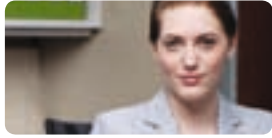




DYMO

CardScan[®] **v9**
Contact Management System



Capture, organise and manage your contacts easier than ever.

Turn contacts into opportunities!

CardScan[®] Executive combines a fast, colour-capable business card scanner with the latest version of our award-winning CardScan contact management software.

Just scan any business card, or drag-and-drop contact data from any email signature or web page – CardScan software automatically enters the data into the appropriate fields to create an indispensable digital address book.

New CardScan v9 software includes a redesigned interface and great new features that make managing your contacts easier than ever. With the new Microsoft Outlook[®] Add-in feature, you can now scan contacts into and manage contacts directly from Microsoft Outlook (included for CardScan Executive and CardScan Team; available separately for CardScan v8 users and for CardScan Personal v9). New Image View feature allows users to flip through business card images.

CardScan Executive Features:

- 1 Capture contact data without typing! Scan directly from business cards or drag-and-drop from emails or web pages
- 2 Edit, sort, search, classify, and remove duplicate contacts faster and more easily than ever
- 3 New features let you scan business cards directly into Microsoft Outlook[®] (Windows[®] only; add-in available separately for CardScan[®] v8 models and CardScan v9 Personal models)
- 4 Sync seamlessly with Outlook[®], Outlook[®] Express, Palm[®], Windows Mobile[®], Windows Contacts, Act![™] Standard and Premium for Workgroups and Lotus Notes[®] (Windows[®]) or Mac[®] Address Book (Mac[®])
- 5 Print labels for contacts with one click with your DYMO[®] LabelWriter[™] 400 or 450 series label printer (sold separately)
- 6 Scan business cards in 7 languages, from 14 different countries



CardScan[®]

CardScan Includes:

- CardScan Scanner
- CardScan Software
- USB 2.0 Cable
- Quick Start Guide
- Cleaning Card

Try CardScan Executive Free for 30 Days



CardScan comes with a 30-day unconditional money back guarantee!

If you don't agree that CardScan is a major step forward in managing your contact information, return it to us within 30 days and we will refund your money, no questions asked.

The full CardScan® Contact Management Line up

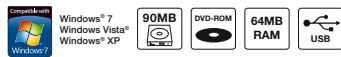


CardScan | Personal

Accurate, Affordable Contact Management System

This palm-sized black and white scanner comes with a travel pouch so you can scan business cards anywhere.

- Print labels for contacts with one click with your LabelWriter™ 400 or 450 series label printer (sold separately)
- Scan business cards in 7 languages, from 14 different countries

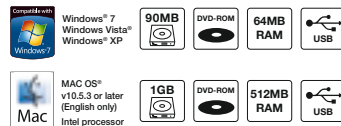


CardScan | Executive

Accurate, High-Performance Contact Management System for PC and Mac®*

CardScan Executive combines a fast and accurate color-capable business card scanner with the latest version of our award-winning CardScan contact management software.

- New features let you scan business cards directly into Microsoft Outlook® (Windows® only; add-in also available separately for CardScan® v8)
- Print labels for contacts with one click with your DYMO® LabelWriter™ 400 or 450 series label printer (sold separately)
- Scan business cards in 7 languages, from 14 different countries



CardScan | Team

Accurate, High-Performance Contact Management System for sharing files

Includes password protection for restricted access plus licenses for two users so you can share your contacts.

- Share contact information with another person safely with password protection for restricted access, two licenses included (expandable)
- New features let you scan business cards directly into Microsoft Outlook® (Windows® only; add-in also available separately for CardScan v8)
- Scan business cards in 7 languages, from 14 different countries



	Feature	CardScan Personal	CardScan Executive	CardScan Team
Data Exchange and Transfer	Synchronise with Microsoft® Outlook and Outlook Express	√	√	√
	Synchronise with Palm® Desktop	√	√	√
	Synchronise with Windows Mobile® and Windows Contacts	√	√	√
	Synchronise with ACT!® Standard and Premium for Workgroups	–	√	√
	Synchronise with Lotus® Notes (Windows)	–	√	√
	Synchronise with GoldMine® v 6.7	–	√	√
Contact Management	De-duplication wizard	√	√	√
	Quick search	√	√	√
	Categorise contacts	√	√	√
	Microsoft Outlook® Add-in	–	√	√
	Save any CardScan® file in .csv or .vcf	√	√	√
	Quick launch: route mapping	√	√	√
	Launch email	√	√	√
	Print LabelWriter™ labels	√	√	√
	Import and export data	√	√	√
	Multiple options for viewing contacts	√	√	√
Number of Users	Network sharing	1	1 (expandable)	2 (expandable)
Scanning	Scan in monochrome	√	√	√
	Scan in colour	–	√	√
	Scan speed per business card	5 sec.	3 sec.	3 sec.
Production Data	Connection	USB 2.0	USB 2.0	USB 2.0
	Size (W x D x H mm)	121 x 83 x 38	165 x 92 x 44	165 x 92 x 44
	Weight (excluding cable)	218 g	261 g	261 g

*Mac available in English only

DYMO

A **NewellRubbermaid** Brand

Distributed by :
DYMO bvba, Sint-Niklaas, Belgium
www.dymo.com
© 2010 DYMO